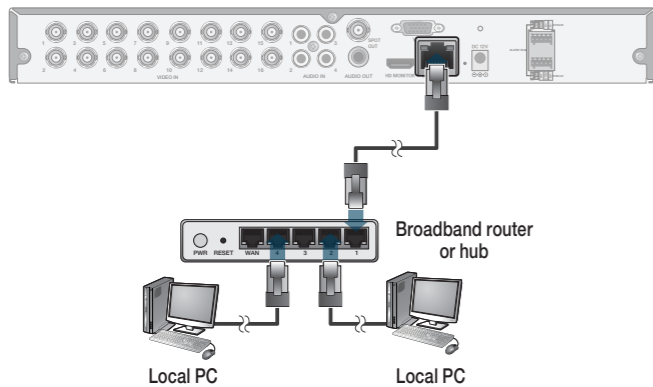
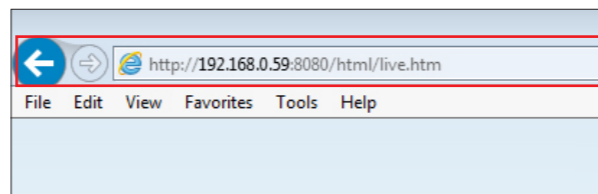


5 Network Setting

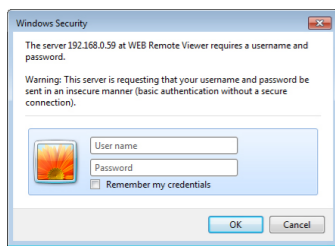
Network Connection



To access the Web Viewer



- Open the browser and enter the IP address of DVR, or enter the URL address in the address bar.
 ex) if you use the DDNS of the DVR:
 http://00115123456.dvlink.net :8080
 If you do use the IP address of the DVR:
 http://192.168.0.210 : 8080
 For more information about the router and network settings, refer to the user manual of the respective product.



- When the login dialog appears, enter the user name and password.
 The initial administrator ID is "ADMIN" and the password should be set when logging in for the first time.
 Be aware when you enter the ID whether it is upper or lower case.



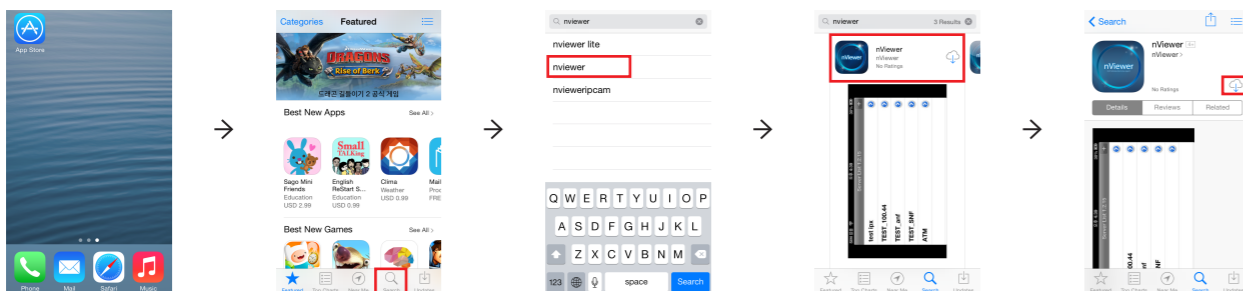
- Click the upper warning bar to install the ActiveX before enabling the add-in function.
- When the security warning window appears, click <Install>.



- When the ActiveX is installed completely, you will see the live screen.
 For more information about using the Web viewer, refer to the user manual.

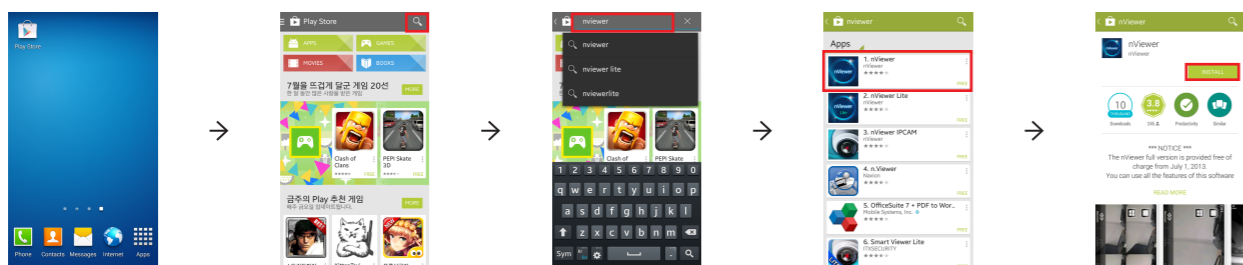
6 Access to the mobile viewer

How to download and access the iOS-specific viewer



- From your iPhone, access App store.
- From the lower menu bar, click <Search>.
- Type "nViewer" in the search bar.
- Select "nViewer" to install it.
- When done, select "nViewer" again to run it.

How to download and access the Android-specific viewer



- From your smart phone, access the Market.
- From the top menu bar, click <Search>.
- Type "nViewer" in the search bar.
- Select "nViewer" to install it.
- When done, select "nViewer" again and install it.

Quick Guide

4CH/8CH/16CH 1U 5M HYBRID DVR

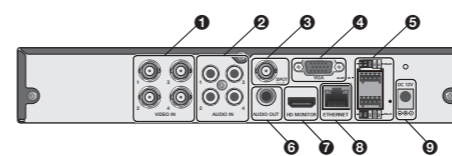


If you want to download the data or a backup player, Please scan the QR code or use the website (www.down-data.com)

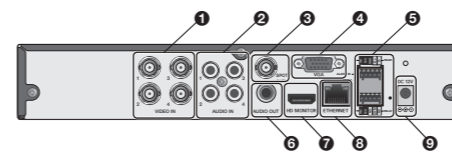
1 Installation

Rear View

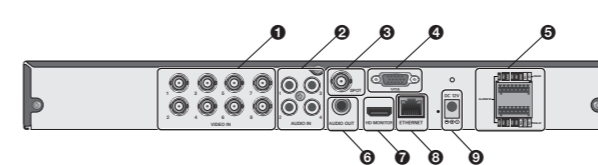
4CH A



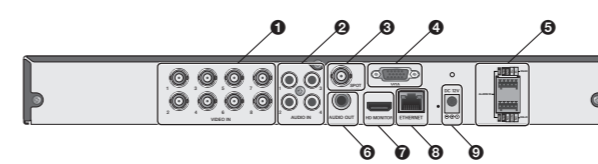
4CH B



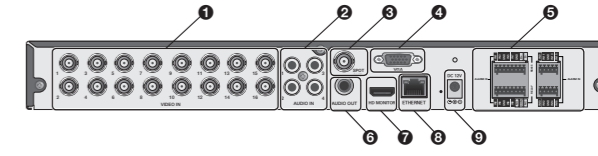
8CH A



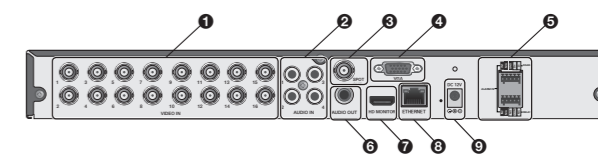
8CH B



16CH A

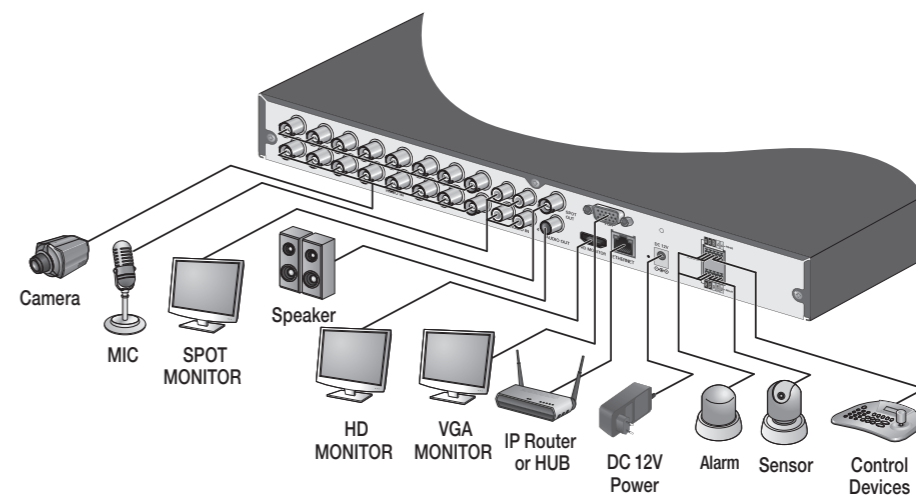


16CH B



No.	Name	Description
1	VIDEO IN	Video input terminal for cameras.
2	AUDIO IN	Port for audio input.
3	SPOT OUT	Exclusive port for SPOT output only. (Connect to a TV monitor.)
4	VGA	VGA monitor video output port.
5	RS485	Ports for communication with external devices such as PTZ camera and system keyboard.
6	RELAY	Relay Terminal output port.
7	ALARM IN	Alarm input signal port.
8	AUDIO OUT	Port for speaker connection.
9	HD MONITOR	HD monitor video output port.
10	ETHERNET	Network port for connection to the Internet, router or hub.
11	DC 12V	Power input port. Connect to a 12V adaptor.

Basic Layout



Since the cable quality may affect directly to the video quality depending on the distance between the camera and DVR, it is recommended to consult an authorized installer when installing the DVR.

2 Getting Started

Log In

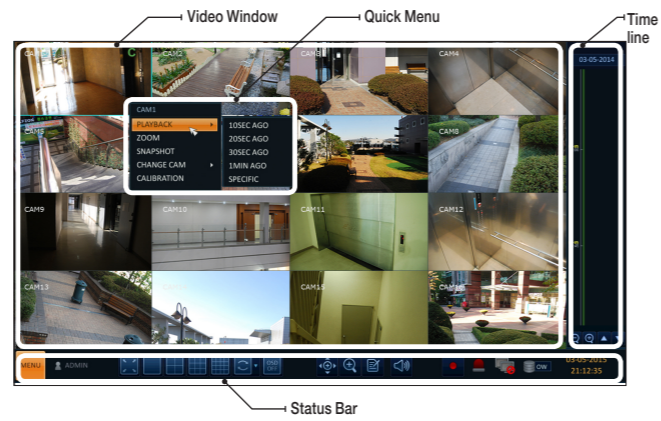


- When the system starts, the login screen appears.
- Select the user ID and enter the password. The initial administrator ID is "ADMIN" and the password should be set when logging in for the first time.
- Click <OK>.
 - For safe and secure use of the product, change the password after purchasing.
 - In case you forgot your password, you can click <Forgot Password?> to verify your E-MAIL and change your password.

Status Bar You can use the buttons on the bottom status bar to control the DVR.

Item	Description
	Select one of the system setup, search and backup menu items before accessing it.
	Show the ID of the user who has currently logged in.
	Edit the screen layout to show the status bar and timeline at all times or only when the mouse cursor hovers on the status bar/timeline.
	Used to select a split mode.
	Select Auto Sequence Mode. When a user arranges channels on desired tiles of split screen, such setting is listed for later access. Selecting a screen setup directly switches the screen mode as configured.
	Display or hide the OSD menus on the screen.
	Move to the PTZ screen. You can control the PTZ operations of a PTZ-compliant camera on the PTZ screen.

Live Screen



Item	Description
	Move to the Zoom screen.
	Display the log list of the recent recording events.
	You can use the camera supporting the audio input to listen to the audio.
	Start the emergency recording.
	Blinks when the event occurs. It will not blink if no action to the event has been set. Click to view information about the event that occurred.
	Check if network connection is made via an external PC or mobile device. Click this to view the details of the concurrent users and to check the network connection status.
	Show the disk space information. If you have set the disk overwrite mode, it will be displayed "OW" (Over Write) from the start point of the overwriting.
	Display the current time and date.

Quick Menu

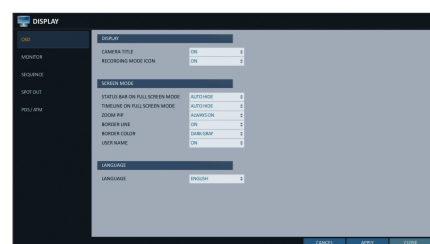
Item	Description
Channel No	Display the number of the current channel.
PLAYBACK	Start playing the video of the selected channel from the specified time.
ZOOM	Move to the Digital Zoom.
SNAPSHOT	Capture the current live video and save it in the .jpeg format. <ul style="list-style-type: none"> Then, you can save the captured video in the HDD or export it to an external USB memory device.
CAM CHANGE	You can assign the selected screen to another channel.
CALIBRATION	You can calibrates the camera image.

Timeline

Item	Description
Timeline Date	01-01-2015 Display the date of the current timeline. Click this to select a desired date of the timeline.
Zoom in/out the timeline	 Expand or collapse the timeline.
Navigation through Timeline	 Move to the previous or next point of time in the timeline. You can also use the mouse wheel to navigate through the timeline.
Timeline Bar	Represent the recorded data. The color of each bar indicates: <ul style="list-style-type: none"> Green : Continuous Recording Red : Alarm Recording Blue : Motion Recording Yellow: Panic Recording

- Double-click the timeline to move to the Playback mode. Drag and drop it to make backup or event search for the specified area.

Language Setting



- Select <MENU> - <SYSTEM SETUP> from the status bar.
- From <SYSTEM SETUP> - <DISPLAY>, select <OSD>.
- Select a preferred language.
- Click <APPLY>.

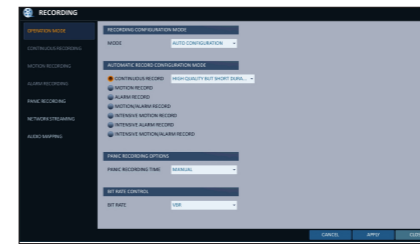
Date/Time Setting



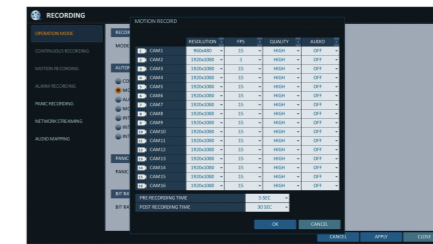
- Select <MENU> - <SYSTEM SETUP> from the status bar.
- From <SYSTEM SETUP> - <SYSTEM>, select <DATE/TIME>.
- Specify the display format of the current time and date.
 - As the existing data in the same time and date will be deleted if duplicates are found, back up the existing data for later use.
- Click <APPLY>.

3 Recording

Automatic Recording Setting



- You can select <MENU> - <RECORD SETUP> from the status bar.
- Set <RECORD SETUP MODE> to <AUTO CONFIGURATION>.
- Select "Automatic Record Configuration Mode".

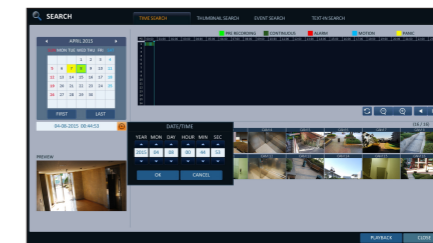
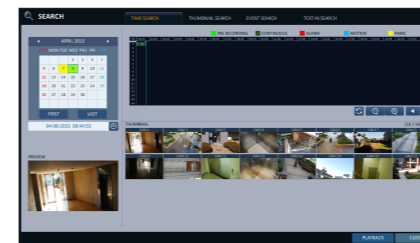


- ALWAYS HIGH VIDEO QUALITY** : Recording will proceed in the best quality regardless of the event at all times. As this option will always make recording in the best quality, the recording period is the shortest compared to the other record modes.
- MOTION RECORD** : Recording will proceed only if a motion is detected.
- ALARM RECORD** : Recording will proceed only if an alarm event occurs.
- MOTION/ALARM RECORD** : Recording will proceed only if a motion is detected or an alarm event occurs.
- INTENSIVE MOTION RECORD** : Normally recording will be performed in a low quality. However, the quality will switch to high if a motion is detected.
- INTENSIVE ALARM RECORD** : Normally recording will be performed in a low quality. However, the quality will switch to high if an alarm event occurs.
- INTENSIVE MOTION/ALARM RECORD** : Normally recording will be performed in a low quality. However, the quality will switch to high if an alarm event occurs or a motion is detected.

- Click <APPLY>.

4 Search

Time Search



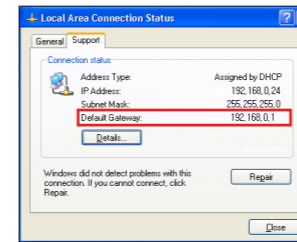
- From the <SEARCH> menu, select <TIME SEARCH>.
- Specify the search date and time from the calendar in the left corner of the screen.
- You can identify the type of the recording data by the color in the bar.

- Yellow Green (PRE RECORDING)** : The pre-recording is performed on the recording data after you set the <PRE RECORDING TIME> from <OPERATION MODE>.
- Green (Continuous)** : The continuous recording is performed on the recording data.

- Red (Alarm)** : The alarm event recording is performed on the recording data.
 - Blue (Motion)** : The motion event recording is performed on the recording data.
 - Yellow (Panic)** : The panic manual recording is performed on the recording data.
- Click to move to a desired start time in the time bar, or use the buttons at the bottom of the status bar to make search.
 - Select an item to play and click <PLAY>.
 - Click to move to a desired time, or simply double-click a desired time in the time bar to play the video data on that time.
 - For details on thumbnail search and event search, refer to the user manual.

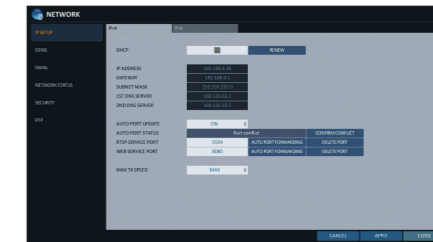
5 Network Setting

Network Connection Setting

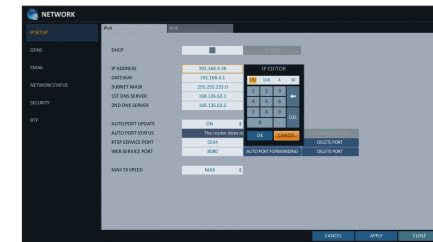


- Connect the [ETHERNET] port in the rear panel to the router.
- Connect the [ETHERNET] port of the router directly to the fixed IP LAN cable, or connect it to the ADSL modem.
- Check the network address information if using a network environment connected to the same router.
- Enter the network setting menu of the DVR and provide the IP address.

To configure the network settings



- From the main menu of the DVR, move to <SYSTEM SETUP> - <NETWORK> - <IP SETUP>.
- Uncheck the DHCP checkbox and provide the necessary information manually. (Check the network address information in the network environment settings and enter the correct information.)

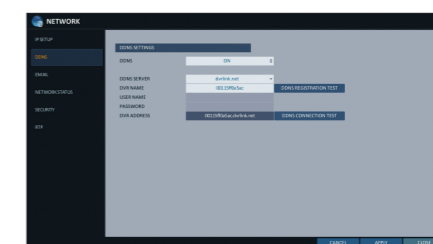


- IP ADDRESS** : 192.168.0.123 (enter the network IP address.)
- GATEWAY** : 192.168.0.1 (enter the gateway address.)
- SUBNET MASK** : 255.255.255.0 (type the subnet mask.)
- 1ST, 2ND DNS SERVER** : 168.126.63.1 (enter the address of a DNS server.)

- Enter an IP address that falls in the private IP range provided by the router. ex) 192.168.1.2-254, 192.168.0.2-254, 192.168.

- When done, configure the port forwarding for RTSP and Web Service ports by clicking Port Forwarding. (The default value of the Web service port is 8080.)
- Click <PORT FORWARDING> for each. You will see the confirmation message. Click <APPLY> and exit the menu.
- The network settings of the DVR are complete.

- Some router models may not support UPNP properly. If you see a failure message after <PORT FORWARDING> settings, refer to the user manual of the router and configure the DMZ or port forwarding settings manually.



- When the network configuration is complete, proceed with the DDNS settings to allow access to the DVR from outside. From the main menu of the DVR, move to <SYSTEM SETUP> - <NETWORK> - <DDNS>.
- Rename the DVR. (The default name of the DVR is the MAC address of the DVR.) Enter a desired name in combination of characters and numbers.

- When done, click <DDNS REGISTRATION TEST> and <DDNS CONNECTION TEST> in this order. If you receive a success message. Check the DVR address and click <APPLY> at the bottom.
- Check the DVR address and the Web service port in the network settings to make sure that any Internet-connected PC can access the DVR.
- If you type "mydvr" for the DVR name from the DDN item, the address of the Web viewer is "http://mydvr.dvlink.net: 8080".